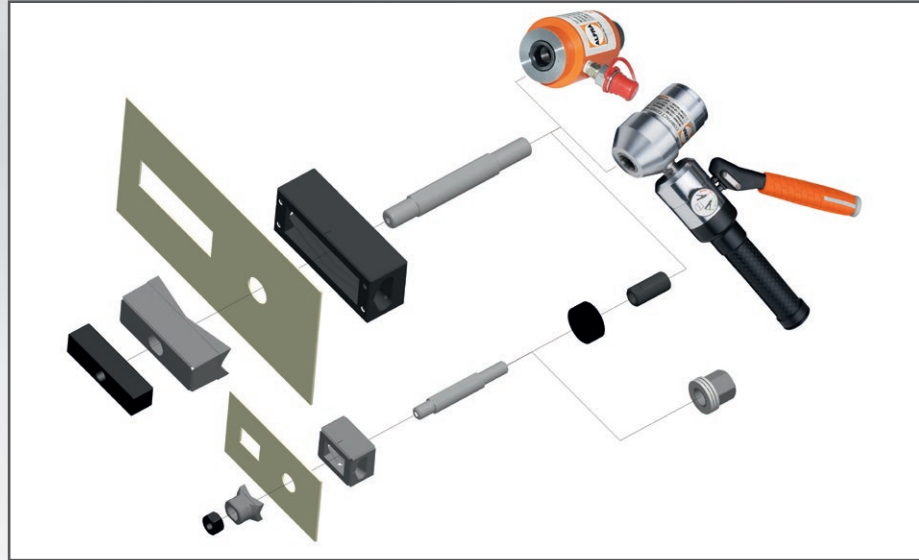
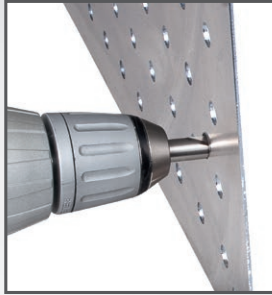


DE ALFRA BLECHLOCHER® FormCut® für Stahlblech (S235) | EN sheet steel | FR acier vormal | ES acero suave  
 ALFRA BLECHLOCHER® FormCut+® für Edelstahl (VA) | stainless steel | acier inox | acero inoxidable

FormCut®		mm	Anzahl Pole / Number of pole	FormCut+®					FormCut®		mm	Anzahl Pole / Number of pole	FormCut+®								
	mm				mm					mm				mm							
	2,0	17,0 x 19,0			1,5	●	●			2,0				2,0		●	●	30			
	2,0	21,8 x 25,8			1,5	●	●			3,0	125,0 x 125,0			2,0		●	●	30			
	2,0	22,0 x 30,0			1,5	●	●			3,0	138,0 x 138,0			2,0		●	●	30			
	2,0	22,0 x 42,0			1,5	●	●				2,0	19,8 x 11,3		9	1,5	●	●	10			
	2,0	25,0 x 50,0			1,5	●	●				2,0	28,2 x 11,3		15	1,5	●	●	10			
	2,0	45,0 x 92,0			2,0	●	●				1,75	41,9 x 11,3		25	1,25	●	●	10			
	2,0	46,0 x 92,0			2,0	●	●				1,75	58,4 x 11,3		37	1,25	●	●	10			
	3,0	68,0 x 138,0			2,0	●	●			1,65	55,7 x 13,9	50		1,0	●	●	10				
	2,0	36,0 x 52,0	6		2,0	●	●			2,0				1,5	●	●		14			
	2,0	36,0 x 65,0	10		2,0	●	●				2,0	Ø 22,5 mit 3 mm Nase with 3 mm lug			1,5	●	●		14		
	2,0	36,0 x 86,0	16		2,0	●	●					2,0			Ø 22,5 2-seitig abgeflacht auf 18,5 mm Flattened to 18.5 mm on 2 sides		1,5	●	●		14
	2,0	36,0 x 91,0			2,0	●	●					2,0		Ø 22,5 4-seitig abgeflacht auf 20,1 mm Flattened to 20.1 mm on 4 sides			1,5	●	●		14
	2,0	36,0 x 112,0	24		2,0	●	●							2,0			33,3 x 17,0 x 10,0 Profilzylinder Profile cylinder		1,5	●	●
	2,0	46,0 x 86,0			2,0	●	●							2,0	Ø 16,3 4-seitig abgeflacht auf 14,1 mm Flattened to 14.1 mm on 4 sides				1,0	●	●
	2,0	46,0 x 112,0			2,0	●	●														
		1,75	12,7 x 12,7				1,25	●		●				1,75				1,25	●	●	
1,75		15,8 x 15,8		1,25	●		●		1,25	●	●			1,25	●	●			10		
2,0		19,0 x 19,0		1,5	●		●		1,5	●	●			1,5	●	●			14		
2,0		22,2 x 22,2		1,5	●		●		1,5	●	●			1,5	●	●			14		
2,0		24,0 x 24,0		1,5	●		●		1,5	●	●			1,5	●	●			17		
2,0		25,4 x 25,4		2,0	●		●		2,0	●	●			2,0	●	●			20		
3,0		45,5 x 45,5		2,0	●		●		2,0	●	●			2,0	●	●			20		
3,0		46,0 x 46,0		2,0	●		●		2,0	●	●			2,0	●	●			24		
3,0		50,8 x 50,8		2,0	●		●		2,0	●	●			2,0	●	●			24		
3,0		68,0 x 68,0		2,0	●		●		2,0	●	●			2,0	●	●			24		



- DE** Achtung: - Gewinde der Zugschrauben immer gut ölen.  
 - Aufsetzen der Stempelspitzen auf dem Matrizenboden vermeiden.
- EN** Attention: - Threads always to be greased sufficiently.  
 - Punch tips must not touch die bottom.
- FR** Attention: - Toujours bien huiler le filetage des vis de traction.  
 - Éviter de poser la pointe du poinçon sur l'outil inférieur.
- ES** Atención: - Mantenga las roscas de los tornillos de ajuste siempre bien aceitadas.  
 - Evite la colocación de las puntas del troquel sobre el plato de la matriz.

